

GENEE **VISION**[®] 2100



Classroom for the Future



Classroom for the Future

GENEE SOLUTIONS
INDIA PRIVATE LIMITED
An ISO 9001:2008 certified company

GENEE **VISION**[®] 2100



For more Information...
Call us: 011-49554955

Tel: 011-49554955

@ Email: info.india@geneeworld.com, sales.india@geneeworld.com

www Website: www.genee-india.com, www.geneeworld.com

Fax: 011-49554956

Post - B-15, Ram Dutt Enclave, (Near Uttam Nagar East Metro Station), Uttam Nagar, New Delhi-110059, India

Quick set up guide



Quick set up guide for **Genee Vision 2100** visualisers

Quick guide contents

Now that you have received your visualiser you will want to get started straight away.

Visualisers can be used independently through a direct connection to a projector or monitor screen, or can be linked to a computer to integrate with software applications and interactive whiteboards.

Over the next few pages you will be shown how to connect and operate your visualiser.

1. Package contents

2. Connectivity identification

3. Connecting to a projector

4. Using the features

5. Switching projector inputs

6. Loading the software

7. FAQ & Support

8. Operating positions

Package contents



Visualiser unit

Remote control
(slotted into base of unit)

Software CD

Carry case



USB
A-A lead

S-VHS
cable

Composite A/V
phono cable

Power supply
adapter

IEC mains
cable

VGA
male-male

Connectivity identification

Rear panel



Side panel

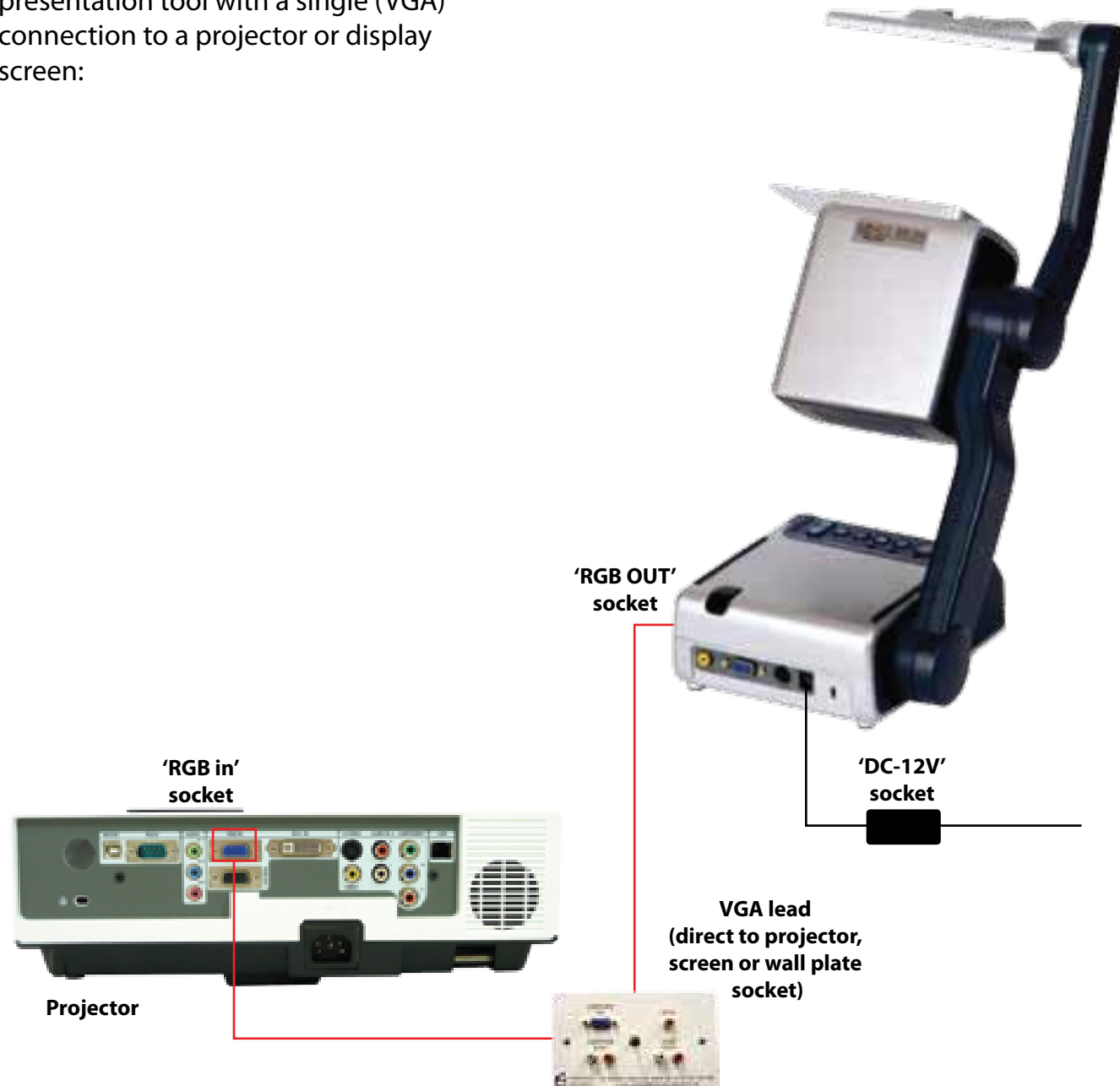


VIDEO OUT / S-VIDEO OUT
RGB OUT 1 / RGB OUT 2
DC-12V
RGB-IN
USB

Visualiser video output
RGB output (output the same signal)
External 12V power adapter input connector
Laptop, computer or other RGB signal input
Computer image capture and video recording
for both PC and Mac

Connecting to a projector

You can simply use your visualiser as a presentation tool with a single (VGA) connection to a projector or display screen:



You should now be able to see any 2D or 3D object placed under the camera, and use the built-in functions.

Using the features

The visualisers have built-in functions that can be operated either from the control panel buttons or from the remote control.



Button functions on the visualiser

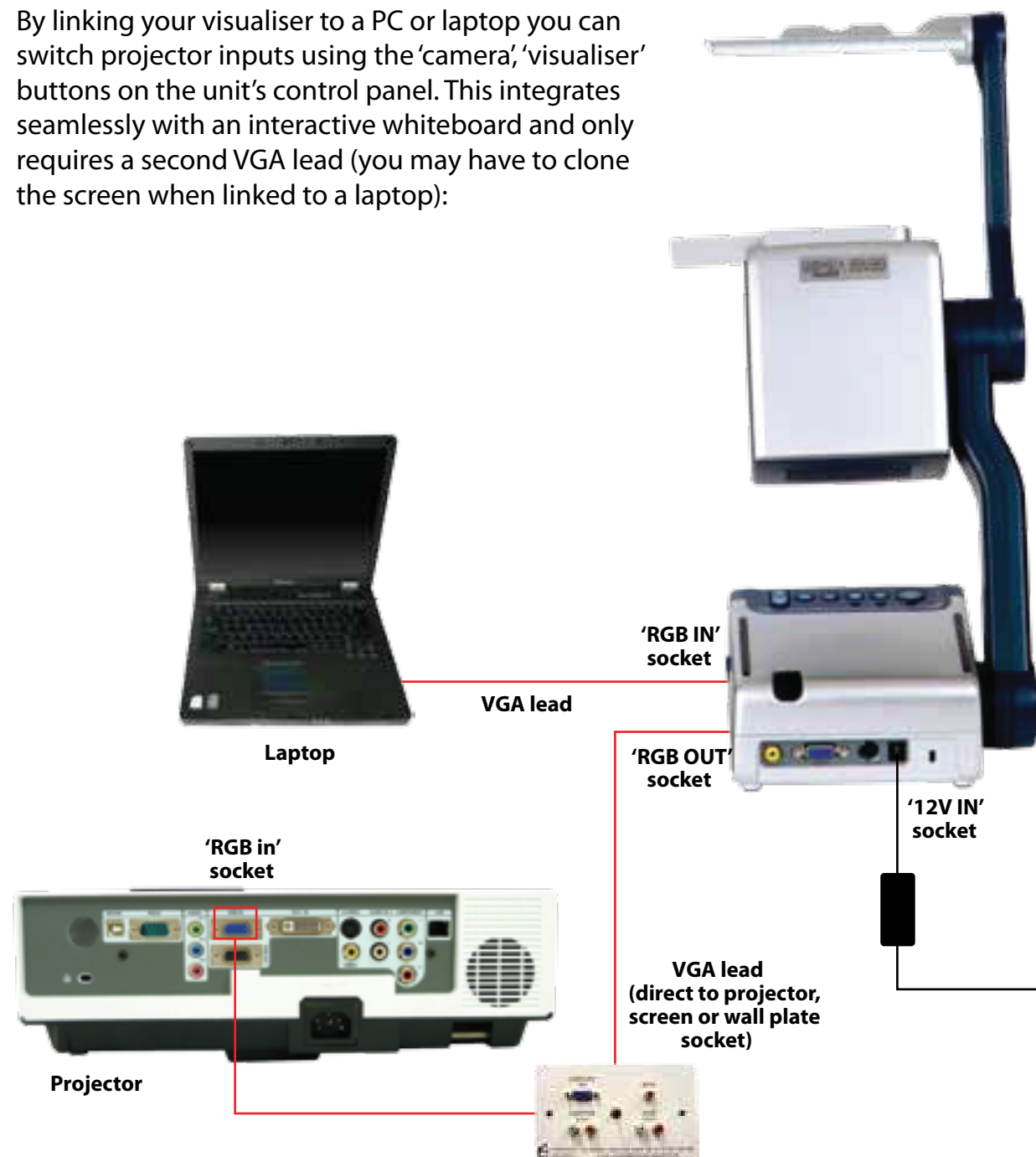
- Power** Press the button once to power on the visualiser; press the button again to power off the visualiser
- Output visualiser signal button** Press the button, the RGB OUTPUT terminal outputs the visualiser signal
- Output computer signal button** Press the button, the RGB OUTPUT terminal outputs the computer signal
- A Auto button** Press the button to automatically adjust white balance and focus
- Light button** Each time you press the button, the lighting changes as below:
 - The body lights on
 - The slide holder back light on
 - All the lights off
- Zoom button** Press the or button to zoom in or zoom out

Button functions on the remote

- POWER** Control the visualiser On/Off
- NEG** Display negative image
- MIRROR** Reverse the image
- LAMP** Control the arm lights and back light
- FREEZE** Freeze the image
- XGA** Projector type
- B&W** Add and remove colour
- SPLIT** Image Split function
- D./S.** Switch between static mode and dynamic mode
- TEXT** Sharpen image
- T/W** Increase and decrease the magnification
- TITLE** Freeze the top 1/8 of the screen
- FAR/NEAR** Focus far or near
- AUTO** To auto adjust white balance and auto focus
- CCD/PC1/PC2** CCD/RGB input signal selection
- RED + / -** Alter colour balance
- BLUE + / -** Alter colour balance
- BRIGHT+ / -** Adjust brightness of image
- Remarks:** Frz, Title, D./S. and Split functions are only available on PROJECTOR OUT port.

Switching projector inputs

By linking your visualiser to a PC or laptop you can switch projector inputs using the 'camera', 'visualiser' buttons on the unit's control panel. This integrates seamlessly with an interactive whiteboard and only requires a second VGA lead (you may have to clone the screen when linked to a laptop):



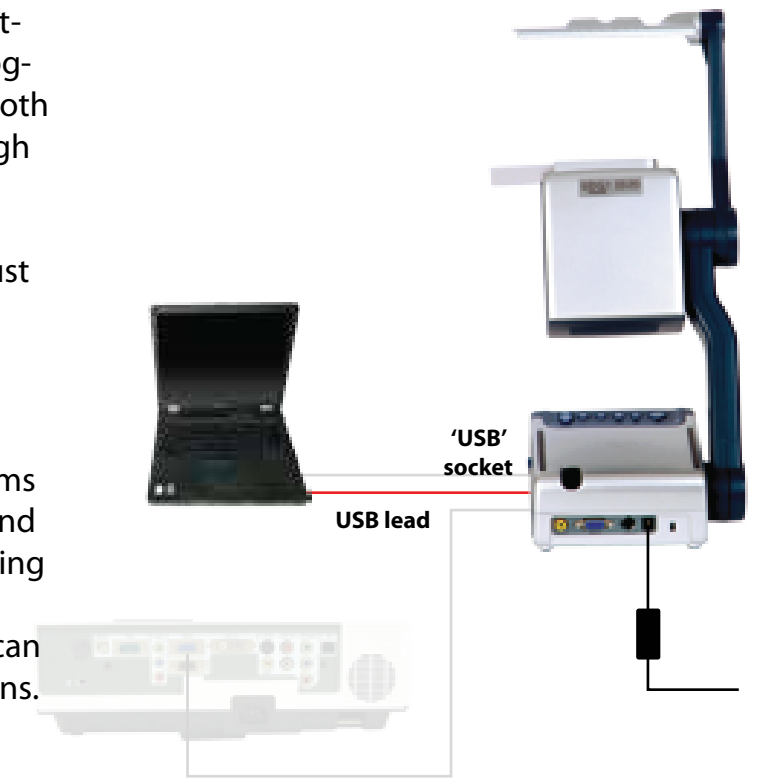
If your PC is connected to a splitter box, simply connect the VGA lead that comes from the wall-plate socket into the visualiser's 'Projector' socket, then use another VGA lead to link the splitter box to the visualiser's 'Computer In' socket. (The visualiser itself can be used as a splitter box!).

Loading the software

The accompanying disk has essential software for enabling your computer to recognise the visualiser and capture images, both still and moving. This will be done through the USB connecting lead.

The driver for your operating system must be installed before connecting the USB lead. The set-up wizard will take you through the process.

VideoCap and Genee Toolbar are programs that will give you live camera windows and whiteboard tools on your desktop, allowing you to annotate over them or capture in common image and video formats that can be incorporated into different applications.



The disk also contains additional information, including user guides and training videos.

FAQ

1. I cannot get an image through the projector

- i. Is the power connected and switched on (see step 3)?
- ii. Have you opened the lens cover?
- iii. Is the VGA lead connection from the projector plugged into the visualiser?

2. How do I switch to my desktop image on my board?

- i. Check that your VGA lead is connecting your visualiser to your computer (see step 3).
- ii. Press the 'output computer signal button' (see step 4).
- iii. Press the 'output visualiser signal button' to return to the visualiser.

3. How do I annotate over my visualiser images?

- i. Check that the supplied VideoCap and/or Genee Toolbar has been installed.
- ii. Check that the supplied USB lead is connecting the visualiser to your computer.
- iii. Open either the VideoCap or Genee Toolbar software to get a live video window (you may have to select the USB 2861 camera if there is a choice).
- iv. You can now use your IWB tools or the Genee Toolbar tools to annotate over.

4. Will this work with any board?

Yes.

5. Can I save these images?

VideoCap and Genee Toolbar will save both still images and video images. You can also use generic programs such as Microsoft MovieMaker or insert images directly onto Word pages, for example, by going to the 'insert from camera or scanner' command.

Please contact technical@geneeworld.com if the problem persists.

Support

Free technical helpline

Tel: 011-49554955

Fax: 011-49554956

Email: info.india@geneeworld.com, sales.india@geneeworld.com

Website: www.genee-india.com, www.geneeworld.com

Operating positions

