

GENEE **VISION**[®]

150



Classroom for the Future



Classroom for the Future

GENEE SOLUTIONS
INDIA PRIVATE LIMITED
An ISO 9001:2008 certified company

GENEE **VISION**[®]

150



Quick set up guide

For more Information...
Call us: 011-49554955

Tel: 011-49554955

@ Email: info.india@geneeworld.com, sales.india@geneeworld.com

www Website: www.genee-india.com, www.geneeworld.com

Fax: 011-49554956

Post - B-15, Ram Dutt Enclave, (Near Uttam Nagar East Metro Station), Uttam Nagar, New Delhi-110059, India



Quick set up guide for **Genee Vision 150** visualisers

Quick guide contents

Now that you have received your visualiser you will want to get started straight away.

Visualisers can be used independently through a direct connection to a projector or monitor screen, or can be linked to a computer to integrate with software applications and interactive whiteboards.

Over the next few pages you will be shown how to connect and operate your visualiser.

1. Package contents

2. Connectivity identification

3. Connecting to a projector

4. Using the features

5. Loading the software

6. FAQ

7. Support

Package contents



Visualiser unit



Remote control



Software CD

USB
A-A lead



Power supply
adapter



IEC mains
cable



VGA
male-male



Connectivity identification

Connection ports



DC-12V

USB

RGB OUT 1

DC-12V

External 12V power adapter input connector

USB

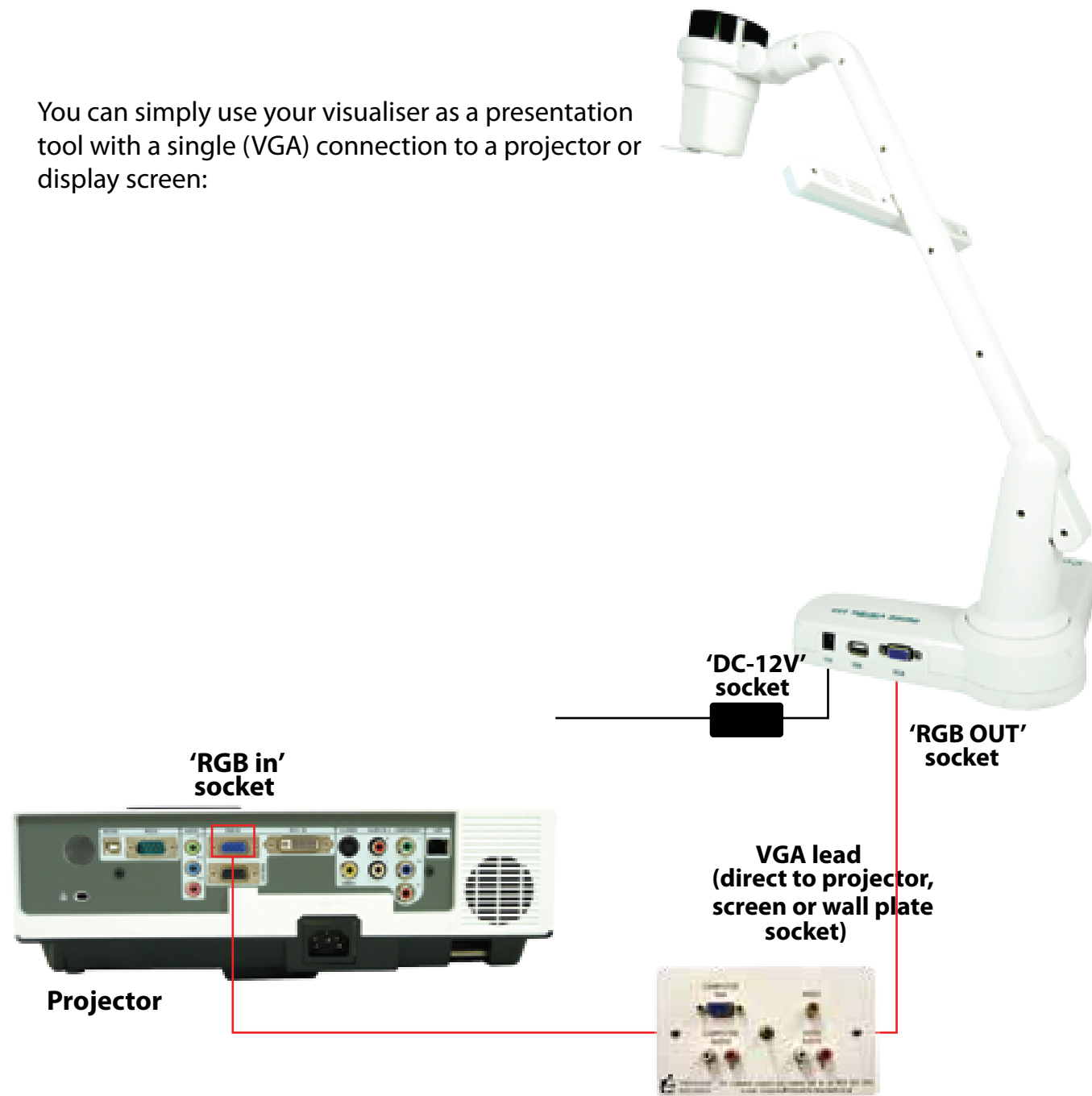
Computer image capture and video recording for both PC and Mac

RGB OUT 1

RGB output

Connecting to a projector

You can simply use your visualiser as a presentation tool with a single (VGA) connection to a projector or display screen:



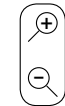

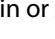
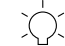
You should now be able to see any 2D or 3D object placed under the camera, and use the built-in functions.

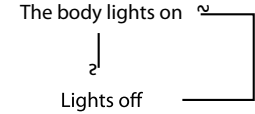
Using the features

The visualisers have built-in functions that can be operated either from the control panel buttons or from the remote control.




Button functions on the visualiser

-  **Zoom button** Press the  or  button to zoom in or zoom out
-  **Light button** Each time you press the button, the lighting changes as below:



The body lights on

Lights off
-  **Power** Press the button once to power on the visualiser; press the button again to power off the visualiser

Button functions on the remote

- POWER** Control the visualiser On/Off
- SAVE** Save an image
- RECALL** View saved images
- LAMP** Control the arm lights
- FREEZE** Freeze the image
- NEG** Display negative image
- MIRROR** Reverse the image
- SPLIT** Image Split function
- XGA** XGA/SXGA
- B&W** Add and remove colour
- TITLE** Freeze the top 1/8 of the screen
- PROJECTOR POWER** Control projector if linked
- PROJECTOR INPUT** Input selection
- TEXT** Sharpens image
- T/W** Increase and decrease the magnification
- BRIGHT +/-** Alters brightness
- FAR/NEAR** Focus far or near
- AUTO** To auto adjust white balance and auto focus
- RED +/-** Alter colour balance
- BLUE +/-** Alter colour balance
- Remarks:** Frz, Title, and Split functions are available on PROJECTOR OUT and USB ports.

Loading the software

The accompanying disk has essential software for enabling your computer to recognise the visualiser and capture images, both still and moving. This will be done through the USB connecting lead.

The driver for your operating system must be installed before connecting the USB lead. The set-up wizard will take you through the process.

VideoCap and Genee Toolbar are programs that will give you live camera windows and whiteboard tools on your desktop, allowing you to annotate over them or capture in common image and video formats that can be incorporated into different applications.



The disk also contains additional information, including user guides and training videos.

FAQ

1. I cannot get an image through the projector

- Is the power connected and switched on (see step 3)?
- Is the lens cover open?
- Is the VGA lead connection from the projector plugged into the visualiser?

2. How do I switch to my desktop image on my board?

Swap the VGA projector lead from the visualiser to your computer.

3. How do I annotate over my visualiser images?

- Check that the supplied VideoCap and/or Genee Toolbar has been installed.
- Check that the supplied USB lead is connecting the visualiser to your computer.
- Open either the VideoCap or Genee Toolbar software to get a live video window (you may have to select the USB 2861 camera if there is a choice).
- You can now use your IWB tools or the Genee Toolbar tools to annotate over.

4. Will this work with any board?

Yes.

5. Can I save these images?

VideoCap and Genee Toolbar will save both still images and video images. You can also use generic programs such as Microsoft MovieMaker or insert images directly onto Word pages, for example, by going to the 'insert from camera or scanner' command.

Please contact technical@geneeworld.com if the problem persists.

Support

Free technical helpline

Tel: 011-49554955

Fax: 011-49554956

Email: info.india@geneeworld.com,
sales.india@geneeworld.com

Website: www.genee-india.com,
www.geneeworld.com