



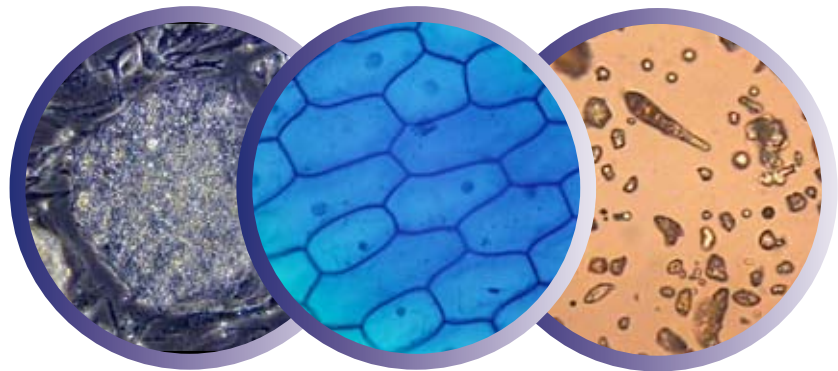
True Scientific Instrument

GENEE **VISION**[®]
Visualiser Micro



Key Features

- True scientific instrument
- Comes with its own editable software
- Plug and Play digital camera



Genee Vision Micro

Genee Vision Micro is the newest member of the Genee Vision family. The Genee Vision Micro enables all users to make any lesson or investigation truly interactive. With full functionality of a microscope Genee Vision micro also has a digital camera attached which allows image capture of all slides and video recording of the resources being shown. Genee Vision Micro can be connected to any PC, Laptop, Interactive Whiteboard or projection device to allow everyone in the class or lecture to view the slides together and on a much larger scale. The ability to save and capture images of the slides to a PC or server opens up a huge possibility for discussions as captured images can be used in future lessons/lectures and can be open on an interactive white board enabling full integration with other software and annotation.

Key Features

- Innovative scientific instrument
- Powerful magnification with 12X optical and 8X digital zoom allows viewing any object in great detail without bending parts that lead to breakage
- Digital camera provides excellent image quality
- Smart auto focus button achieves the ideal visual effect with the touch of a button
- Record capability - straight to pc, so the footage can be viewed on a larger scale
- Built-in back lit panel for negative and slide viewing
- USB2.0 port offers fast and unlimited computer image, save/recall/edit

Benefits

- Maximum interaction with the audience. The presenter is not required to remain at the front of the room to conduct the presentation.
- Strong solid design.
- A fantastic tool that can be used in all the scientific departments and divisions throughout the organisation.
- Free carry case and software.

General Specifications

Digital Camera
 1/2" CMOS Sensor, 2.0 Mega Pixels
 Max resolution 1600 x 1200
 USB Output
 White Balance: Auto
 Systems requirement: Windows 200/XP
 Accessories: USB cable, Driver CD
Optical Body
 Inclined 30 degrees
 Interpupillary distance adjustment
 range: 53-75 mm
 Stage
 135mm x 125 mm, mechanism stage
 Moving range
 75mm x 35mm
Illumination
 6V 20W halogen lamp, Condenser NA: 1.25

Wide field eyepieces specification

Field (mm)

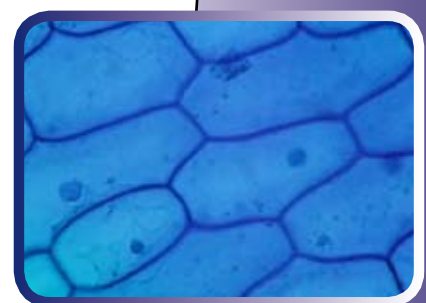
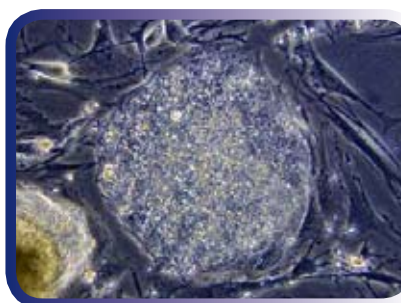
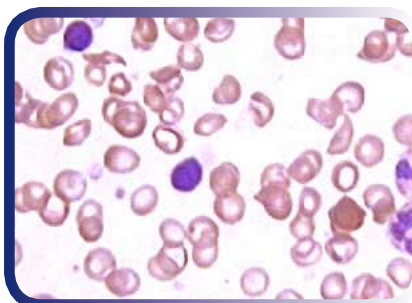
WF10 x18

WF 16x11, Optional

Achromatic ? Semi - plan achromatic objectives specification

	N.A	W.D (mm)	
4X	0.10	37.4	
10X	0.25	6.61	
40X	0.65	0.64	
100 x Oil	1.25	0.19	
SP 4 X	0.10	23.1	Optional
SP10X	0.25	4.1	Optional
SP40	0.60	0.6	Optional
SP100xOil	1.25	0.38	Optional

* Design and specifications are subject to change without notice.



Contact Us

PO Box 3256, Wolverhampton, WV3 0LA

Tel: 0870 386 1900

Email: enquiries@geneeworld.com

Web: www.geneeworld.com